

## DEKADAL WEATHER REVIEW

### HIGHLIGHTS

- Above normal to normal rainfall was observed over much of the bimodal area and some places over the unimodal area during November 11-20, 2015; the southern part of the country experienced below normal rainfall performance.
- Crops growth at various stages and farming activities over the bimodal area and some places over the unimodal area progressed well.
- During November 21-30, 2015 over the bimodal area, farmers are advised to continue with routinely farm activities while over the unimodal area they are advised to continue with land preparation and plant where soil moisture is adequate to support seed germination.

No: 07. 2015/16 Cropping Season

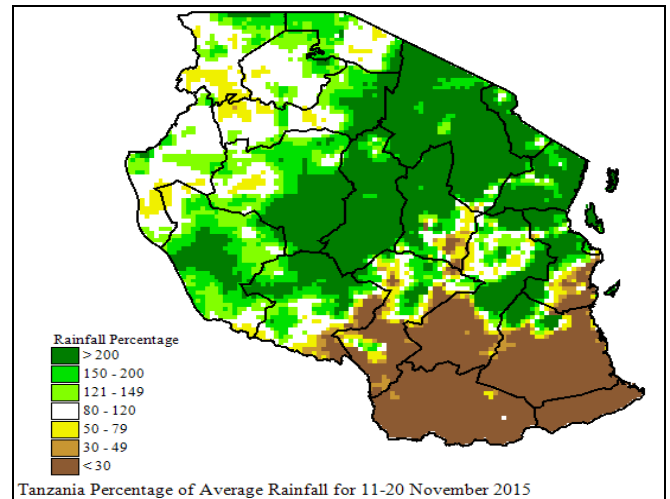
Review for November 11-20, 2015 and Outlook for November 21-30, 2015

### SYNOPTIC SUMMARY DURING NOVEMBER 11-20, 2015

During this period, the pressure systems in the northern hemisphere (Azores and Siberia) intensified while their counterparts in the southern hemisphere (St. Hellena and Mascarene high pressure systems) relaxed significantly. With the observed setting, the zonal arm of the Inter-Tropical Convergence Zone (ITCZ) shifted south-wards from its previous position. On the other hand, cool to slightly warm SSTs were observed over the eastern Atlantic Ocean closer to Angola coast, warm SSTs were observed in the North West Indian Ocean (closer to Somali coast) while neutral to warm SSTs were observed in the southwestern Indian Ocean close to East Africa coast.

### RAINFALL SUMMARY DURING NOVEMBER 11-20, 2015

In view of the observed synoptic conditions during the period, *vuli* rainfall continued to feature over the bimodal area especially the north-eastern highlands whereby above normal to normal rainfall performance was observed over much of the area as shown by greenish yellow and green legend in Figure 1 (Satellite Rainfall Estimates merged with gauge data from Tanzania rainfall stations network showing rainfall performance as percentage of long-term average in the country during the dekad). Above normal to normal seasonal rainfall was also observed in some places of the unimodal area, especially central areas as well as western regions and parts of south-western highlands. However, the southern part of the country including the southern coast, southern regions and parts of south-western highlands experienced below normal rainfall performance, indicated by brown legend in Figure 1.



Tanzania Percentage of Average Rainfall for 11-20 November 2015

Figure 1: Rainfall performance in Tanzania during November 11-20, 2015 as percentage of long term average.

### TEMPERATURE CONDITIONS DURING NOVEMBER 11-20, 2015

Moderate to high temperature conditions prevailed in the country.

### AGROMETEOROLOGICAL SUMMARY DURING NOVEMBER 11-20, 2015

With observed good rainfall performance over much of the bimodal area and some of the unimodal areas, crops growth at various stages and farming activities were reported to progress well. Over the bimodal area, weeding of maize crop was the major activity in many place over Lake Victoria basin, northern coastal regions and Same district while planting was the major activity over north-eastern highlands particularly Manyara and Kilimanjaro regions. Crops were reported to be in general good conditions. Over the unimodal area, farmers were mostly engaged in land preparation with ongoing planting activities in some places including Kigoma,

Katavi, Tabora and Njombe regions. Pasture and water for livestock and wildlife was moderate over much of the country except Dodoma, Singida, Manyara and Arusha regions where pasture was still low.

### HYDROLOGICAL CONDITIONS DURING NOVEMBER 11-20, 2015

Water levels in dams and river flow discharges were moderate across of the country.

### EXPECTED SYNOPTIC CONDITIONS DURING NOVEMBER 21-30, 2015

During the period, high pressure systems in the northern hemisphere are expected to continue intensifying while southern hemisphere high pressure systems are expected to relax further. However there is an indication of build-up and intensification of the over land temporary "Botswana" high-pressure system. This situation will continue pushing the ITCZ south-wards from its current position. Slightly cool to warm SSTs are expected to be observed over Atlantic Ocean closer to Angola coast, and warm to neutral SSTs are expected in the North-West Indian Ocean (closer to Somali coast) while warm to neutral SSTs are expected to persist over Central and South-West Indian Ocean (East Africa coast). This setting will continue to influence wet conditions over most parts of the country but weakening the zonal arm of ITCZ over the country.

### EXPECTED WEATHER DURING NOVEMBER 21-30, 2015

Lake Victoria Victoria Basin (Kagera, Mwanza, Mara, Geita, Simiyu and Shinyanga regions), rain western regions (Kigoma and Tabora regions) and south-western highlands (Rukwa, Iringa and Mbeya regions): rain showers and thunderstorms over some areas are expected. Northern coast (Dar es Salaam, Morogoro and Tanga regions, the isles of Unguja and Pemba): rains showers over some areas are expected, especially during second half of the dekad. North-eastern highlands (Kilimanjaro, Arusha and Manyara regions): rains showers over few areas are expected. Central areas (Dodoma and Singida regions) and southern coast (Mtwara and Lindi regions): rain showers and thunderstorms over few areas are expected, especially during second half of the dekad. Southern

region (Ruvuma region): rain showers and thunderstorms over few areas are expected.

### AGROMETEOROLOGICAL OUTLOOK AND ADVISORY DURING NOVEMBER 21-30, 2015

With the expected rainfall over the bimodal area during November 21-30, 2015, farmers over the bimodal area are advised to continue with routinely farm activities while over the unimodal area they are advised to continue with land preparation and plant where soil moisture is adequate to support seed germination. However, farmers should always seek professional advice from Agricultural extension officers in their localities and take precautionary measures for their safety and properties.

### HYDROLOGICAL OUTLOOK DURING NOVEMBER 21-30, 2015

During the period, water levels in dams and river flow are expected to continue improving in many parts of the country.

Prepared by

TANZANIA METEOROLOGICAL AGENCY

3<sup>rd</sup>, 4<sup>th</sup> & 10<sup>th</sup> Floors - Ubungo Plaza - Morogoro Road.

P.O. Box 3056 Tel. 255 -(0) 22 - 2460706-8 ; Fax: 255 - (0) 22 - 2460718 E-mail: (1) [met@meteo.go.tz](mailto:met@meteo.go.tz) (2) [agromet1\\_tz@meteo.go.tz](mailto:agromet1_tz@meteo.go.tz)

Dar es Salaam UNITED REPUBLIC OF TANZANIA